

## How to configure Email Gateway

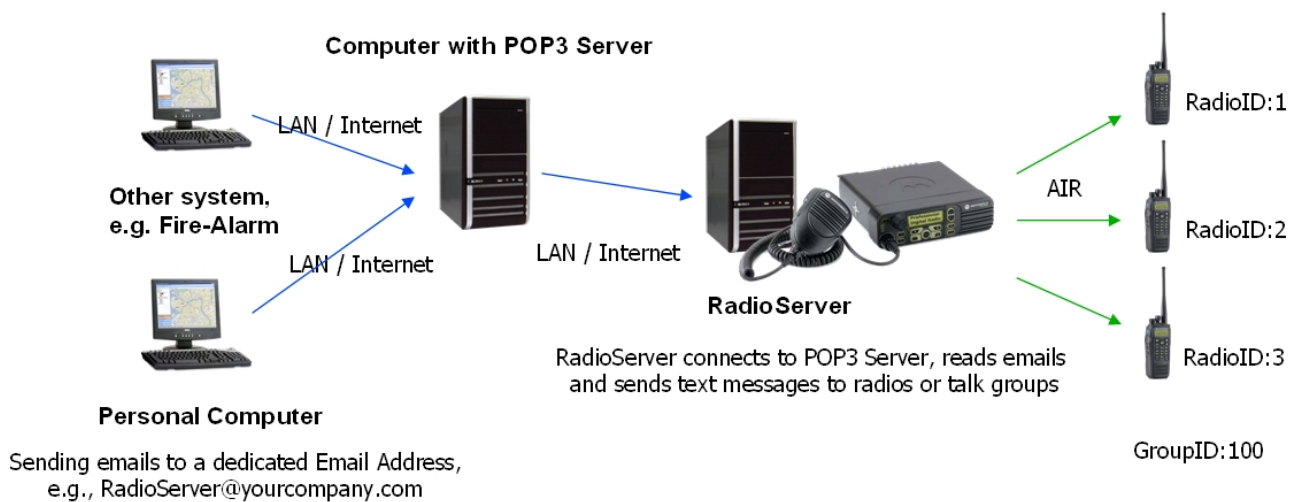
TRBOnet allows you to:

1. Send Text Messages from LAN to a particular radio or talk group (POP3 Server)
2. Forward all Text Messages from radios to base radio to particular email address (SMTP Server)

Note: Microsoft Exchange Server can be used as SMTP and POP3 servers

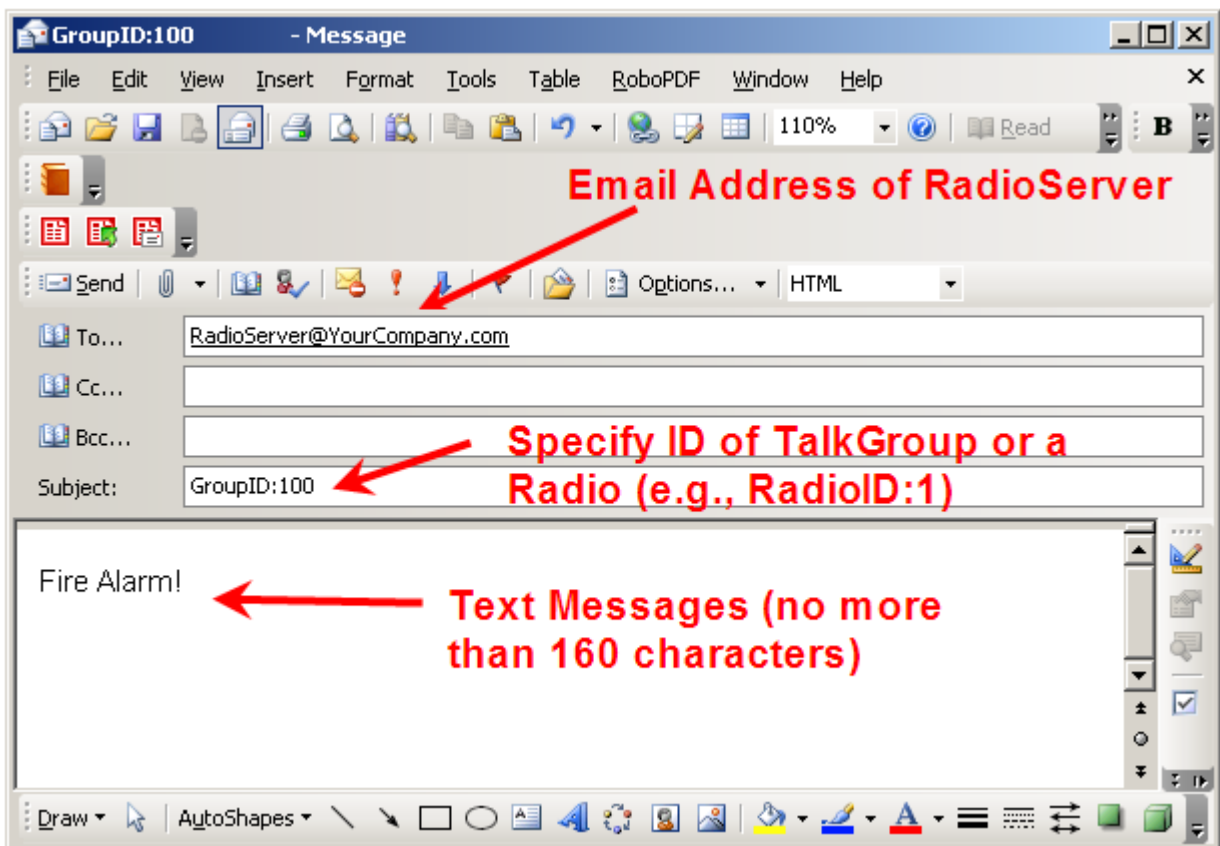
For more information about SMTP or POP3 servers ask your System Administrator.

### 1. POP3 Server Configuration



1.1 Create an email account on your email server. For example [RadioServer@YourCompany.com](mailto:RadioServer@YourCompany.com)

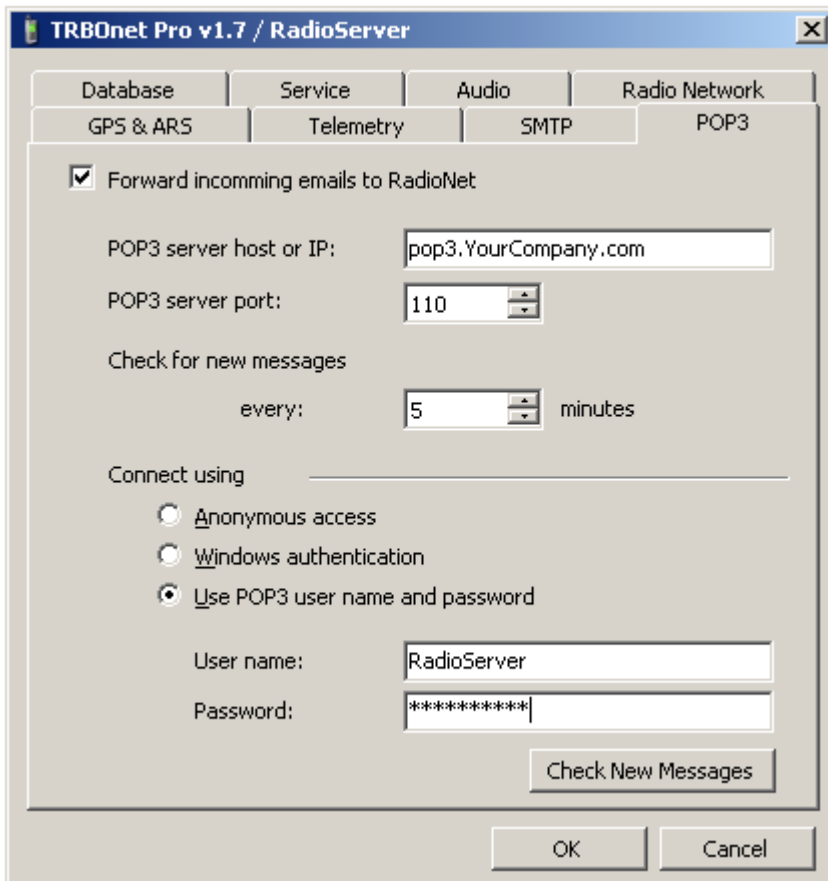
1.2 Send an email to [RadioServer@YourCompany.com](mailto:RadioServer@YourCompany.com). In the “subject” of the letter specify RadioID or GroupID as shown on the picture below.



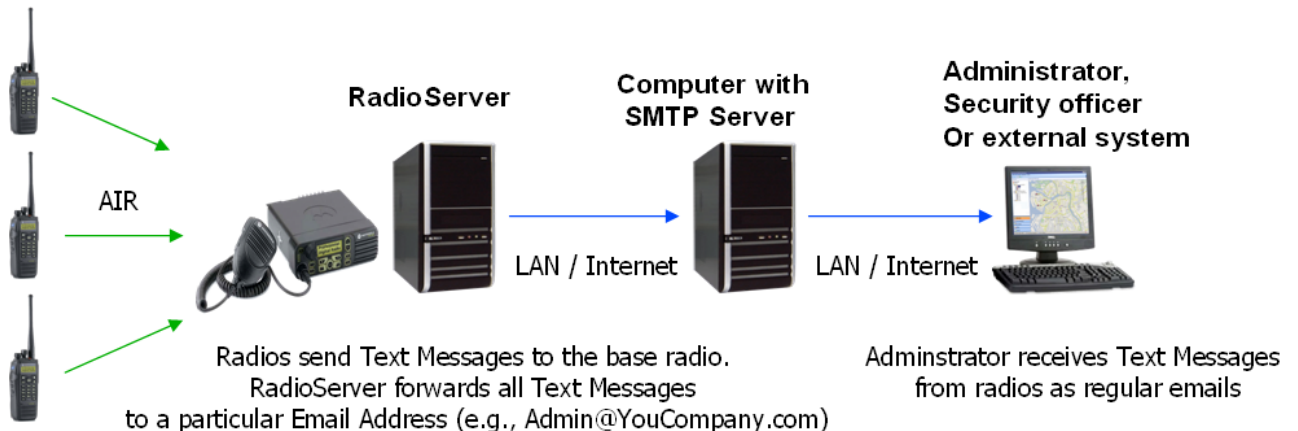
1.3 Run RadioServer Configuration and specify parameters of POP3 Server. Click the button “Check New Messages”. You will see that email box [RadioServer@YourCompany.com](mailto:RadioServer@YourCompany.com) is not empty. (See picture below)

1.4 Click OK and run RadioServer. Radios must receive text messages

1.5 If you do not specify the “subject” of email properly or specify not existing RadioID then you will see an appropriate notification in the Event Log of DispatcherConsole.



## 2. SMTP Server Configuration



2.1 Run RadioServer Configuration and specify parameters of SMTP Server. Click the button “Send Test Message”. Make sure that addressee received the test message successfully. (See picture below)

2.2 Click OK and run RadioServer. Send a text message from a radio to a base radio and make sure the addressee received an email.

TRBOnet Pro v1.7 / RadioServer

Database	Service	Audio	Radio Network
GPS & ARS	Telemetry	SMTP	POP3

Forward Text Messages to email recipient

Input messages       Output messages

Recipient:

Sender:

SMTP server host or IP:

SMTP server port:

Connect using

- Anonymous access
- Windows authentication
- Use SMTP user name and password

User name:

Password: